

The Common Cup

Bishop Michael (who, you may remember, worked as an epidemiologist before becoming a bishop) has recently reviewed the risk of COVID transmission associated with sharing the common cup during Holy Communion. Based on recent scientific studies, his conclusion is that the risk of COVID being transmitted through sharing the common cup is minimal.

IN THIS ISSUE

News from our Parishes

Read Easy

*Redlynch Community
Patch*

Lent Course

Lent Lunches

Diary Dates



There are two bases for this conclusion. The first is that COVID is transmitted by breathing the virus into our respiratory system, not by ingesting it into our stomach. The second is that the virus does not survive contact with certain liquids, among them grape juice and red wine. Each of these statements is supported by scientific studies reviewed and endorsed by Bishop Michael.

Bishop Michael suggests that this can give us confidence regarding resuming our practice of sharing the common cup during Holy Communion. But he also recognises that for some people, perhaps many, this represents a considerable step and people may not yet feel safe drinking from the common cup, whatever the science might suggest.

The reason for mentioning this is to give everyone who regularly receives Holy Communion in our parishes the opportunity to reflect and consider their own position on this issue, and to let either a churchwarden or the Rector know, so that our practice can be reviewed, taking into account the thoughts and feelings of our congregations. Is it time to resume sharing the common cup, or not?

There is no intention of re-introducing the common cup until people are generally ready to do so. If the common cup is not re-introduced, then the current practice will continue (the priest 'intincting' (i.e. dipping) the host into the chalice), and people are of course free at any time to choose to receive communion in one kind only (i.e. the bread alone and not the wine), which is just as valid and effective as receiving in both kinds.

Please think about this and make your views known.



If you have something to contribute to a future edition of this newsletter, do please send it to the Rector at the benefice office address.

Easy-to-follow details of how to receive this newsletter by email can be found on the St Mary's website, or email benefice@stmarysbruton.org. If you are aware of someone who might like to receive it but does not use email, please consider printing a copy yourself and delivering it to them.

News from our Parishes

Thank you to everyone who contributed food or other items to the 'Generous January' appeal, supporting the work of the Brue Larder. The number of families seeking help from the Brue Larder continues to increase and there are signs that donations through the major supermarkets are decreasing, so your generosity is very welcome.

Bruton Choral Society is busy rehearsing for its 30th anniversary concert on 5 March. This was postponed because of the pandemic and we all look forward to enjoying the programme of music.

Our Benefice social event on 29 January involved a breakfast gathering at At The Chapel in Bruton, followed by a visit to St Mary Magdalene, Upton Noble for Morning Prayer. We were very warmly welcomed by the congregation there and joined them in a beautiful service of Morning Prayer with hymns, led by their two churchwardens, followed by delicious coffee and home-made biscuits in the warmth of a nearby home. The first lesson was read by a younger member of the community and prayers for peace were offered, with especial reference to the Shoah.

The next month with 5 Sundays in it is April. As participation in the Benefice social events in October and January was very low indeed, perhaps we need another re-think. Perhaps one of the village parishes might like to host the event in rotation, offering whatever they think most conducive to developing a sense of companionship across the Benefice, as we find ways to express our shared identity in Christ across all boundaries. Any offers?

St Peter's, Shepton Montague plays host once again to a film night. On 9 February, 'The Lost King' will be showing. Doors open (= wine bottles uncorked) at 6.45 pm, film starts at 7.30 pm. Tickets can be bought on the door.

The supply of 'news from our parishes' for this Benefice Newsletter is a bit thin! Please do pass things on to the Benefice office for inclusion. If you feel that not much is happening in the church in your parish, consider reading 'The Provocative Church' (the Benefice Discussion Group book for January).

Read Easy



Read Easy
Helping adults learn to read

Spmirhs fo loof eht si nogard a retaw wollahs ni

You may have taken a little longer than usual to read the above unusual proverb; but supposing you were one of the estimated 2.4 million people in England alone who can barely read or cannot read at all?

There are many complex reasons for being a non-reader, both physical and emotional and the lack of this vital skill leads to shame, embarrassment and crippling lack of confidence which many will work hard to disguise.

Help for non-readers does exist though in the form of a charity called Read Easy whose stated mission is "...for all adults in the UK to have the literacy skills they need to realise their potential and live life to the full."

Read Easy, after carefully interviewing applicants, taking up references and making sure the applicant is suitable, will give training in Phonics, a method which teaches people to recognise the sounds made by letters or groups of letters.

The volunteer or Coach is provided with all the resources necessary for working with their Reader. A trusting relationship builds between them. Sessions take place usually twice a week for half an hour or sometimes once weekly for an hour. The reader will be expected to do homework too. Sessions take place in a safe neutral place which is both quiet and private. With safeguarding in mind the venue will also be public.

I am planning to organise a coffee morning in the community hall in February or March when much more information will be available. I look forward to meeting you there.

Juliet Bowell, Read Easy Coach.

Redlynch Community Patch

A group of volunteers is planning to start a community food growing project at Redlynch – part of the 'Community Patch Project'. There will be a talk to explain about the project – why it is needed and what it will do – on 28th February

at 6.30 pm at St Peter's Chapel, Redlynch. The aim is to develop community resilience by providing affordable food using nature-friendly growing methods.

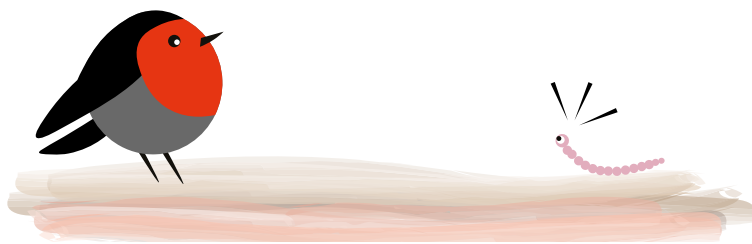
TALK: GROWING, A NEW FUTURE

6:30-7:30PM
TUESDAY 28TH FEBRUARY
REDLYNCH CHAPEL, REDLYNCH

Join us for our first talk as the Community Patch Project, where we'll be discussing how the Community Patch Project will help to create greater community resilience by providing affordable food, while protecting wildlife by using nature-friendly growing methods.



THE COMMUNITY PATCH PROJECT



Lent Course

We are planning to run a Lent course, starting on Monday 27th February. The plan is to study 'Meeting God in Mark' by Rowan Williams, which is available second hand from online bookshops.

The group will meet fortnightly (so 3 sessions in total) at the Rectory in the usual slots for the Benefice Discussion Group - Mondays at 3.00 pm and 6.30 pm.

Lent Lunches

In the past, Lent Lunches have been organised on an ecumenical basis, with a different local congregation from across the denominations taking the lead for each week. What seems to have happened in practice is that each group has 'done' its own week, but not participated in the lunches on other weeks. That is a shame – it would be nice if we could come together for a shared Lent Lunch every week in Lent and share fellowship between the churches.

What we need is a few people who are willing to take the lead on this and make it happen. Could volunteers please contact Juliet Bowell?

Also, we'd like to explore the possibility of combining the lunch with a 'pay it forward' scheme, whereby people attending the Lent Lunch donate the cost of a hot meal to be provided weekly during Lent to families supported by the Brue Larder. This would require one of our local food outlets to prepare hot meals for delivery, which has been done in the past, so could in theory be done again. This also needs someone to co-ordinate it and make it happen. Please contact either Juliet or the Rector if you are able to help with this.

Bruton Choral Society March 2023

We are greatly looking forward to our imminent Concert of French Music which marks the start of our 30th Anniversary year. That such a small town has been producing live choral music for such a long time should certainly be celebrated and our chosen centrepiece for this concert should please many: the much-loved Fauré Requiem. We will also be singing the Fauré Cantique de Jean Racine and Panis Angelicus by Franck.

Our guest conductor will be the inspiring Arturo Serna and we will be joined by Mair Mills (soprano) and Geoff Allan (baritone). We are also delighted to welcome back former Bruton School for Girls pupil Cecilia de Maria (harp soloist) for the Debussy Danse for Harp and Strings.

The performance will take place on Sunday 5 March at 7.00pm in St Mary's Church Bruton. Please do note the earlier than usual time! Tickets are £10 in advance, £12 on the door (children free) and will be available from Bruton Convenience Store, by phoning 01749 813161 or online at www.brutonchoralsociety.org.uk.

The choir is also hosting two social events this month: on Friday 10 March at 7.30pm there is a Quiz Night in Bruton Community Hall.



**BRUTON CHORAL SOCIETY
& ORCHESTRA**

GUEST CONDUCTOR: ARTURO SERNA

FAURÉ REQUIEM

FAURÉ: CANTIQUE DE JEAN RACINE
FRANCK: PANIS ANGELICUS
DEBUSSY: DANSES FOR HARP & STRINGS

CECILIA DE MARIA: HARP
MAIR MILLS: SOPRANO
GEOFF ALLAN: BARITONE
ASHLEY MARSHFIELD: ORGAN

Sunday 5 March 7.00pm
St. Mary's Church Bruton

Tickets £10 advance / £12 door
Available from Bruton Convenience Store,
01749 813161 or www.brutonchoralsociety.org.uk
Accompanied Children Free

Tickets from 01749 812281 £10 to include a Ploughman's Supper. All are very welcome! Then the following morning Saturday 11 March there will be our usual Coffee Morning, also in the Community Hall, with cake stall, bric-a-brac, raffle and the added attraction of hot cross buns.

We very much hope to see as many of you as possible at some or all of these events!

Diary Dates

Diary Dates

- 3 February – Pitcombe PCC meeting, Hadspen Farm at 2.30 pm
- 4 February – Everyday Faith event, Wells at 10.00 am
- 9 February - Film Night at Shepton Montague, 7.30 pm
- 20 February – Brewham PCC meeting, David Cowie's house at 7.30 pm
- 21 February – Shepton Montague PCC meeting, Village Hall at 6.30 pm
- 22 February – Ash Wednesday, Eucharist with ashing, St Mary's at 6.00 pm
- 27 February - Lent course begins, the Rectory at 3.00 pm and 6.30 pm
- 28 February - Redlynch community patch meeting, St Peter's Chapel at 6.30 pm

Further ahead:

- 5 March - Bruton Choral Society concert, St Mary's at 7.00 pm
- 9 March - Shepton Montague Film Night, St Peter's at 7.30 pm
- 14 March - Wyke Champflower annual meeting, Wyke Manor at 6.30 pm
- 18 March - Diocesan Synod
- 21 March - Deanery Synod, venue tbc, 7.00 pm

Contact

Rev'd Jonathan Evans, Rector
8 Wellesley Green, Bruton, BA10 0DU
Tel: 01749 812775
email: rector@stmarysbruton.org

Benefice Office
Plox House, Silver Street, Bruton, BA10 0ED
Tel: 01749 813080
email: benefice@stmarysbruton.org

十