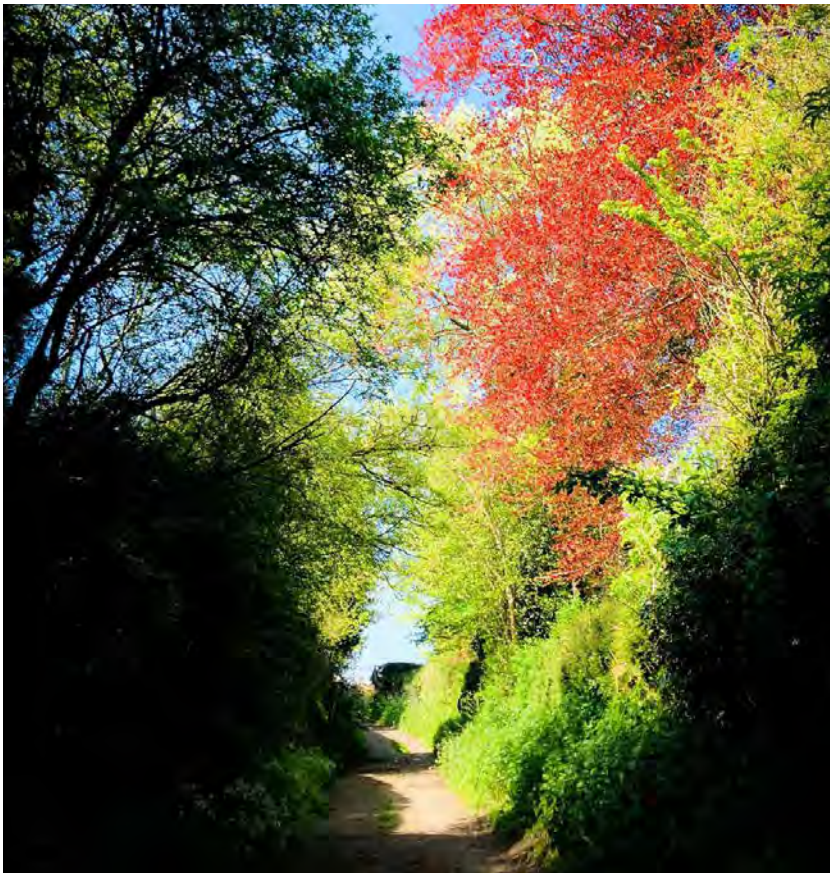


Bruton Pitcombe Redlynch Brewham Shepton Montague Wyke Champflower Bratton Seymour



*Darkey Lane*

I read an interesting article recently, written by a consultant podiatrist. It was not about feet, but faith. He suggested that there is a growing receptivity towards faith; a growing willingness to take seriously questions

## IN THIS ISSUE

Pastoral Visiting Team

News from our Parishes

Redlynch Chapel

Aurin Girls' Choir

Caring for God's Acre

Bell Sunday

Prayer Ministry

Ascension Day

Kimberley Snapshot

Events

Benefice Services

Diary Dates

Contact



which a decade or two ago would have been dismissed as not being worthy of consideration. He gives as examples of this people who might read books about faith, or listen to podcasts which engage with these questions, or might sometimes seek out a seat in a church or cathedral – not to attend a service, but simply to sit in a place which feels somehow different. This openness might find expression in a readiness to have a conversation about what is truly important in life - whether there is more to life than what can be measured. It might include people exploring prayer.

But the author also highlighted a risk. He said that as regards people's attitudes to faith, the Church, on the whole, is well-equipped to recognise clear belief and clear rejection. We know what to do with the person who declares themselves to be a believer. And we also identify and label the non-believer. But how well do we respond to the person whose relationship to faith is partial, hesitant, uncertain? How do we respond to the person who comes to sit in church alone, but would not consider attending a service; who is exploring prayer but would not describe themselves as a Christian?

We offer people pathways to follow: we offer instruction in the faith, we offer corporate worship, we offer the sacrament of Baptism leading to the sacrament of the Eucharist. The risk that the thoughtful podiatrist identified is not that we will discount this

tentative faith as being not good enough, but that we will simply not notice it, because we are used to looking for greater conviction and a readiness to belong.

Perhaps among all the Christian denominations, the Church of England is best placed to engage with this growing curiosity and inclination towards faith. We are not, as some protestant churches are, a confessional church – we do not insist on acceptance of a creed or statement of belief as a pre-requisite for belonging. We do not have any strict criteria for attending or belonging. We do not demand attendance at mass or acceptance of the decrees of a Magisterium. We welcome curiosity and we acknowledge the reality and honesty of doubt. We understand faith as a gradual thing - in the over-used contemporary jargon, it is a 'journey'. We do not see quietness as a weakness.

The question that the article raised for me is whether we are paying sufficient attention to people who are receptive towards the faith, but not wanting to engage in our current ways of being and doing church. Do we notice the people who do not attend services but come into our churches to sit and think or pray? Do we offer them anything, or are we waiting for them (who knows how) to develop a firm conviction and call themselves Christian? Remember: Jesus met Clopas and his companion on the Emmaus road, not in the Temple.



If you have something to contribute to a future edition of this newsletter, please send it to the benefice office address:

**[benefice@stmarysbruton.org](mailto:benefice@stmarysbruton.org)**

Easy-to-follow details of how to receive this newsletter by email can be found on the St Mary's website ([www.stmarysbruton.org](http://www.stmarysbruton.org)), or email [benefice@stmarysbruton.org](mailto:benefice@stmarysbruton.org). If you are aware of someone who might like to receive it but does not use email, please consider printing a copy yourself and delivering it to them.

## Pastoral Visiting Team

We are looking at the possibility of setting up a team of people to work alongside the Rector and share the ministry of pastoral visiting. Training will be provided and DBS checks will be required. If you are interested in exploring this ministry, please contact June Sykes (of Shepton Montague: [june@sykesj.co.uk](mailto:june@sykesj.co.uk)) to let her know of your interest so that we can arrange the necessary training.



## News from our Parishes

All our parishes have now held their annual meetings and we welcome a new churchwarden in Bruton (Phil Madge). We also thank David Cowie for his service as warden as he steps down from that role in Brewham. We recognise with thanks the very long service of Geoffrey and Gloria Barber at Brewham, Peter Wyatt at Pitcombe, and Lee Tibbatts at Shepton Montague as they all step back from PCC membership. We welcome new PCC members in Bruton (David Freestone) and Bratton Seymour (Jane Rupp). Bruton PCC has also appointed a new treasurer, Lorna Taylor, and we are very grateful to Lorna for taking on that role.

### **St Mary's, Bruton**

St Mary's is hosting an event on 12 May at 5.45pm as part of the *Bruton Boost* mental health awareness week. This is a 'come and sing' session for anyone simply to sing and feel a lot better as a result – no musical experience is needed.

There will be a Eucharist for Corpus Christi (Thanksgiving for the Institution of Holy Communion) at St Mary's Bruton on 4 June, 6.30pm.

### **Holy Trinity, Wyke Champflower**

We celebrate Trinity Sunday on 31 May and this is the Patronal Festival for Holy Trinity, Wyke Champflower. We will hold a service of Evensong at 6.30pm. As it is a fifth Sunday, there will not be the

usual schedule of Sunday services and it would be good to see as many people as possible from across the benefice worshipping together that day and supporting this small chapel.

### **Bruton Parish Church, Williamsburg**

We are looking forward to welcoming some pilgrims from Bruton Parish Church, Williamsburg, VA, to Bruton on 5 June. They will be visiting us as part of a UK pilgrimage and we hope to strengthen further the links between our two communities.

### **King's School, Bruton: May Madrigals!**

King's School Singers up to their early morning May Day tricks at the top of the West Tower!



# Redlynch Chapel



Around 25 people attended an open meeting on 18 April to discuss the future of Redlynch Chapel. Most were local residents and there were a few interested observers as well. Some questions were asked about the state of the building, about what alterations might in principle be permitted and what types of potential alternative use might be considered.

People also wanted to know what would happen to the proceeds of sale, if the chapel were to be closed and sold. The Rector answered

that question by saying that if the chapel were sold, the judge of the Ecclesiastical Court (the Diocesan Chancellor) would decide what happened to the sale proceeds and it would be up to us to put forward a case for retaining them within the parish, and that he thought it would be possible to achieve this (although it was not automatic).

Most of the views expressed at the meeting were in favour of trying to find a way of keeping the chapel open for public use rather than closing it and selling it, with several people saying that they favoured some form of community use alongside keeping it in use as a church.

Outside the meeting, the Rector has received other people's opinions that there is no realistic chance of saving the chapel and we should accept the inevitable and sell it now.

The outcome of the meeting was the formation of a project group who will meet to explore potential options for a use, or a range of uses, of the chapel that will produce enough income to be able to keep it open for public/community use.



# Aurin Girls' Choir (Hungary)

We are very excited to be welcoming back the amazing Aurin Girls' Choir for a concert on Monday 29 June, 7.30pm at St Mary's Church, Bruton. From the Kodály Music School in Kecskemét, these girls and the younger Miraculum Children's Choir have visited Bruton many times in the past and delighted us with their performances. More details will be available in the next bulletin. If anyone might be able to help with hosting the girls or staff please email Barbara as soon as possible:

**[bjenkinson708@btinternet.com](mailto:bjenkinson708@btinternet.com)**



# Caring for God's Acre

## **Brimstone, the original Butter Fly**

May is a lovely month to look for butterflies! Several of our native species are on the wing at this time of year, including the striking yellow Brimstone. It is thought that the name 'butterfly' comes from this large yellow beauty

– literally Butter Fly! When you see one flying it is highly visible but actually it can be well camouflaged too: have a look at the shape of the brimstone's wing and you will see that it closely resembles a leaf, so when at rest they can disappear amongst the foliage.

Brimstones can be seen early in the year as they overwinter as adults, emerging from hibernation to lay eggs in April or May, ready to hatch as green caterpillars in July. Following pupation in August, adults are back in early autumn, feeding and finding sites to overwinter. The other spring butterflies that you see will have either overwintered as adults, such as the Red Admiral or small tortoiseshells. Others will have overwintered as a chrysalis or pupa – Orange-tips do this, as do Holly blues. Some butterflies overwinter as caterpillars – the Meadow brown for example.

Brimstone caterpillars feed on Buckthorn and Alder Buckthorn, so if you are planting a hedge try and include these. Buckthorn favours calcareous soil and Alder Buckthorn more acidic conditions. Churchyards are great for butterflies as they contain such a rich array of plants. If you have an area which is managed



as a meadow you may have many species of caterpillar chomping away at the plants within it. Look out for Orange-tips laying eggs on Cuckoo Flower (Lady's Smock), Garlic, and Hedge Mustard; or try to spot the Speckled Wood, also flying in May, which lays eggs on native grasses such as Yorkshire Fog and Couch grass. This butterfly prefers long grass so may use a tussocky area at the back of your churchyard, perhaps near to shade trees.



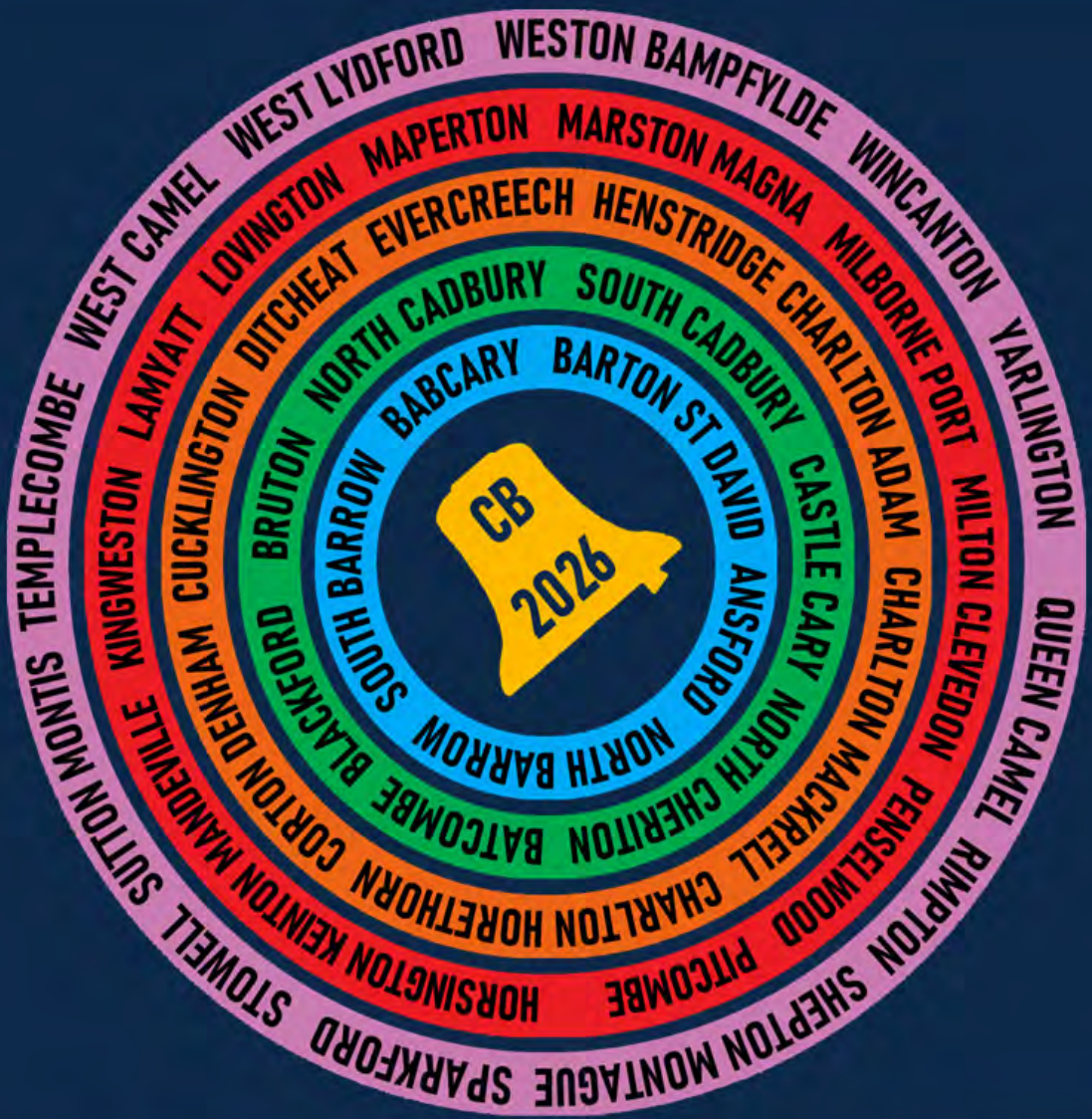
We'd love to know what butterflies you see, as well as any other wildlife that you spot. Why not while away a sunny hour or two looking for butterflies in this beautiful place.

[www.caringforgodsacre.org.uk](http://www.caringforgodsacre.org.uk)



LISTEN OUT FOR THE  
**G**REAT **C**ARY **B**RANCH **R**ING **G**  
 NATIONAL BELL SUNDAY  
 17<sup>TH</sup> MAY 2026

On Bell Sunday, all the towers of the Bruton & Cary Deanery will ring out for the first time in decades. Listen out for a tower near you!  
 44 Towers | 245 Bells | 94 Tons of Heavy Metal



PERCE KINDNESS GOODWILL COMMUNITY

## Bell Sunday, 17 May

Bell Sunday is the national celebration of church bells and ringers. To mark the event, the Cary Branch ringers are combining in an attempt to ring every bell in the branch.

The bells across the branch collectively weigh 94 tons, roughly the same as 12 classic Routemaster buses. The *heaviest tenor* bell is at West Camel (1870 kgs) and the *heaviest treble* is at Bruton (1008 kgs). The *oldest* is at Ansford, dated c.1350, but Bruton has the oldest *dated* bell (1528).

The bells will sound out at different times of day as teams travel around the branch to ring them: from Evercreech in the north to Milborne Port in the south; from Charlton Mackrell in the west to Cucklington in the east.

The Bruton band will ring at Batcombe, Bruton, Pitcombe, Shepton Montague, Yarlinton, Ansford and Castle Cary, and may try to fit in some of the chiming towers too.

Bishop Michael Beasley said:

*Bells are a voice into their communities. They speak of worship and praise, of celebration and sorrow, of commitment and faithfulness. They cry out [...] with a message of hope and good news. Our bells and our ringers have borne witness to God's goodness and faithfulness over many hundreds of years. Long may they continue to do so.*

# Prayer Ministry

## **A Prayer based on James 1**

When we face trials of any kind may we consider it nothing but joy because we know that the testing of our faith produces endurance; and enable us to let endurance have its full effect, so that we may be mature and complete, lacking in nothing. We ask in faith, without doubting, for the one who doubts is like a wave of the sea, driven and tossed by the wind. We thank you for the blessing that is given to anyone who endures temptation: such a one has stood the test, and will receive the crown of life that the Lord has promised to those who love him. We ask for your help that we will not be deceived, for we know that every generous act of giving, as with every perfect gift, comes from above, from the Father of lights, with whom there is no variation or shadow due to change. Help us to be quick to listen, slow to speak, and slow to anger, for by this we rid ourselves of all sordidness and welcome with meekness the implanted word that has the power to save our souls.

## **May – Creation**

Lord, in the song of the birds I hear your delight in all creation. In the warmth of the sunlight and the rain I feel your care for all living things. In this new day, help me to let go of what happened yesterday and concerns about what will happen tomorrow. You

have given me life this day, and with it I have everything I need to be happy. Help me to see my blessings and appreciate them. Amen

### **Wednesday Prayer Meeting**

There is a prayer meeting every Wednesday morning in St Mary's where some of us meet to pray for our community. Anyone is welcome to join us. If you have any requests for prayer, please send them to the Rector and he will let us know.

## Ascension Day



For Ascension Day this year we welcome the Rt Rev'd Fiona Gibson, Bishop of Taunton, to St Mary's as we celebrate Christ's bodily ascension into heaven. The Eucharist for the feast of Ascension is on Thursday 14 May at 7pm.



## Kimberley Snapshot

**Whatever you do to the least of my brothers,  
that you do unto me**

Many people labour under the misunderstanding that being a missionary is all teaching the Bible to people who have never heard God's Word, but it's much more than that. It's more like being Christ at the last supper when He washed the feet of the disciples, and one such person was Rev. John Flynn, known in Australia as 'Flynn of the Inland'.

He had been appointed to the Australian Inland Mission as Superintendent in 1912, and in 1928 Flynn formed the AIM Aerial Medical Service – a one-year experiment based in Cloncurry, Queensland. This experiment later became The Royal Flying Doctor Service. Flynn's missionary work involved the establishment of hospitals in bush communities, but this did not help those who lived even further afield. In his public speaking he would often retell the tragic circumstances that had befallen several bush settlers. The fate of Jimmy Darcy, in 1917, was one of these stories.

Darcy was a stockman at Ruby Plains, a remote cattle station in Western Australia. After being found injured with a ruptured bladder by some friends, he was transported over 30 miles (12 hours), to the nearest town, Halls Creek. Here, the local Postmaster (and the

only man with any first aid training), said that there was nothing he could do for injuries so serious, and tried unsuccessfully to contact doctors at Wyndham, and then Derby, by telegraph. He eventually got through to a doctor in Perth. Through communication by morse code, a doctor guided the Postmaster through two rather messy bladder operations using the only sharp instrument available, a penknife. The bladder operations were successful, but the stockman in the end died from an undiagnosed case of malaria



and a ruptured abscess in his appendix. A WW1 Pilot, Lieutenant Clifford Peel, sent Flynn a letter explaining how he had seen a missionary doctor visiting isolated patients using a plane. Assisted

by Peel with costing estimates, Flynn immediately took the idea of using aircraft to begin his practice.

Along with motorised flight, another new technology was being developed that could replace the complicated means of communication by telegraph, so together with Alfred Traeger, Flynn began experiments with radio in the mid-1920s to enable remote outposts to contact a centralised medical base. The pedal radio was the first result of this collaboration. These were distributed gradually to stations, missions and other human residences around Cloncurry – the base site for a 50-watt transmitter – and eventually throughout the Outback. Thus began the Royal Flying Doctor Service, and the very first Aerial Ambulance on the planet!

But it is much more than a medical service. It went on to become an incredible organisation for the whole community. When I was in the Kimberley there were radio bases in Broome, Derby and Wyndham, and through these bases the School of the Air operated for children on huge pastoral properties everyday. The local CWA (Aust WI) kept the women in touch with one another, there was a medical session for anyone who needed it, and generally the whole Outback Community was kept in communication.

So when you next watch *The Flying Doctors* on television, remember:

***Whatever you do...***

# EVENTS AT ST MARY'S



**Join  
our  
mailing  
list**



# THE BRUTON BOOST

## 11–17 MAY 2026

The Bruton Boost is an initiative from Good Company Bruton, designed to help our community build better mental fitness.

From 11–17 May you'll be able

to take part in a range of free events and activities, all aimed at reducing stress, improving wellbeing, and fostering connection.

Whether you're looking for new coping strategies, a supportive space in which to talk, or just a break from life's pressures, you can take part FOR FREE in practical workshops, creative sessions, one-on-ones, and more.

Booking arrangements vary by event. Follow the green link for more!

[WWW.GOODCOMPANYBRUTON.ORG/BRUTONBOOST](http://WWW.GOODCOMPANYBRUTON.ORG/BRUTONBOOST)



# SHEPTON MONTAGUE PCC

in association with

## SOMERSET MOVIOLA

proudly presents



## HAMNET

2025/125 minutes/12A

in St Peter's Church, Shepton Montague

Thursday 14<sup>th</sup> May at 7.30pm

*Doors open 7.00pm for drinks & snacks*

**Tickets: £7.00 (£3.50 for under 15)**

**pay on the door with card**

**or at the bar with cash**

*All proceeds go to St Peter's Church*

*For more information please contact Sarah Maude 01749 812 149*

Visit our website at: [www.moviola.org](http://www.moviola.org)



# Shepton Montague Plant Sale

on  
Saturday 23rd May 2026

@ 2.30pm  
At St Peters Church

£1.00 Entry for Adults



**LOCAL BEEKEEPERS STALL**

**GARDEN BRIC-A-BRAC**

**RAFFLE**

**TEAS**

**CAKES**

**& PRODUCE**





# INTO THE LIGHT



Rewilding of a former Dairy Farm  
near Bruton

A talk by Daniel Hill  
Rewilding Ranger  
Heal, Somerset

Wednesday 3rd June  
6.30pm for 7pm  
The Prickly Pear (Upstairs)

Tickets £10 by QR Code  
or on the door



All funds to Friends of St. Mary's

# Bruton Choral Society

Musical Director: Barbara Jenkinson  
with The Echoing Air

## Dido & Aeneas: Purcell



Friday 12 June 7.30pm  
St Mary's Bruton

Tickets: ; £15/£20 (18 and under free)

Bruton Convenience Store

07794 425670 or [brutonchoralsociety.org.uk](http://brutonchoralsociety.org.uk)



**DIDO & AENEAS – 12 JUNE, 7.30PM**  
**BRUTON CHORAL SOCIETY SUMMER CONCERT**  
**WITH THE ECHOING AIR**

Join us in St. Mary's Church, Bruton, for a very special performance of Henry Purcell's *Dido and Aeneas*. With a cast led by rising international star Rebecca Leggett in the title role, Bruton Choral Society led by Barbara Jenkinson, and a baroque instrumental ensemble led by Maggie Faultless, this promises to be a night to remember.

A bar will be available for audience members to purchase drinks and there will be an opportunity to meet the soloists and orchestra after the performance.

Bruton Choral Society and The Echoing Air want to make this event accessible to everyone, no matter their circumstances. There are a limited number of tickets for seats in the side aisles available at a reduced rate of £5 for people who would otherwise not be able to attend. To request a discounted ticket, no questions asked, contact us by emailing [brutonchoralsociety@gmail.com](mailto:brutonchoralsociety@gmail.com) (preferred) or calling 07794 425670 (only if you are unable to access emails).

**TICKETS:**

Tickets are available for £20 in the nave (centre) of the church, and £15 in the side aisles. Tickets are available from:

- [www.brutonchoralsociety.org.uk](http://www.brutonchoralsociety.org.uk)
- Bruton Convenience Store
- 07794 425670 by telephone

International, award-winning  
**Aurin Girls' Choir**  
from the Kodály School, Kecskemét, Hungary



Photo: Mark Pickthall

**A varied programme of music**  
including sacred motets, Hungarian folk songs  
and lighter pieces



with St Mary's Children's Choir  
& Bruton Primary School Singers



Conductor: László Durányik

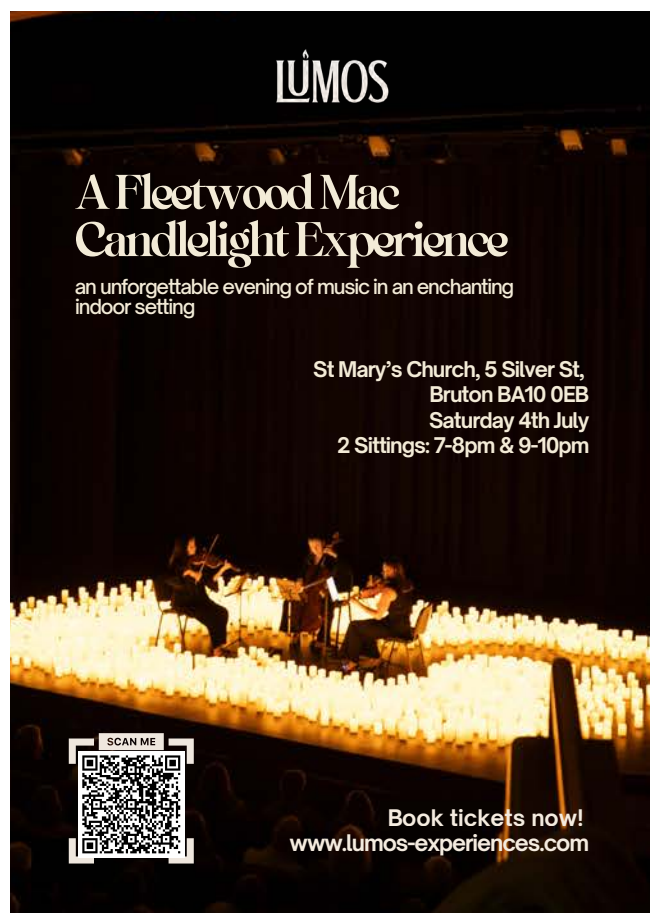
**St Mary's Church Bruton Monday 29 June 7.30pm**

**£10 advance, £12 on door (children free)**  
**Bruton Convenience Store**  
**07794 425670 or**  
**[www.brutonchoralsociety.org.uk](http://www.brutonchoralsociety.org.uk)**



# LUMOS, A FLEETWOOD MAC CANDLELIGHT EXPERIENCE – 4 JULY

## FIRST SITTING 7–8PM, SECOND SITTING 9–10PM



Lumos brings you enchanting concert experiences paying homage to world famous artists. We've partnered with spectacular locations & churches across the UK to deliver a concert experience that is nothing short of magical. This performance will feature a String Trio playing a selection of Fleetwood Mac songs:

- Go Your Own Way
- Second Hand News
- Dreams
- Don't Stop
- The Chain
- You Make Loving Fun
- ...and many others

## TICKETS

[www.lumos-experiences.com](http://www.lumos-experiences.com)

# Benefice Services in May

Season Easter/Pentecost (Gold/Red)	Sunday 3 Easter 5	Sunday 10 Easter 6	Thursday 14 Ascension Day
<b>St John the Baptist, Brewham</b>	<b>9.30am</b> Eucharist (CW)		
<b>St Mary's, Bruton</b>	<b>8am</b> Holy Communion (BCP)  <b>11am</b> Sung Eucharist	<b>8am</b> Holy Communion (BCP)  <b>11am</b> Eucharist (CW1)	<b>7pm</b> Deanery Ascension Day Eucharist
<b>St Leonard's, Pitcombe</b>	<b>11am</b> Holy Communion (BCP)	<b>9.30am</b> Matins (BCP)	
<b>St Peter's, Redlynch</b>			
<b>St Peter's, Shepton Montague</b>		<b>6pm</b> Evening Prayer (CW)	
<b>Holy Trinity, Wyke</b>			
<b>St Nicholas, Bratton Seymour</b>			

RC Mass at St Mary's: 7 May and 4 June, 10am

# Benefice Services in May

Season (Various)	Sunday 17 Easter 7	Sunday 24 Pentecost	Sunday 31 Trinity Sunday
<b>St John the Baptist, Brewham</b>	<b>9.30am</b> Morning Prayer (CW)		
<b>St Mary's, Bruton</b>	<b>8am</b> Holy Communion (BCP)  <b>11am</b> All Age Worship	<b>8am</b> Holy Communion (BCP)  <b>9am</b> Breakfast Service  <b>11am</b> Eucharist	<b>8am</b> Holy Communion (BCP)
<b>St Leonard's, Pitcombe</b>	<b>11am</b> Holy Communion (BCP)	<b>6pm</b> Evensong (BCP)	
<b>St Peter's, Redlynch</b>			
<b>St Peter's, Shepton Montague</b>		<b>9.30am</b> Eucharist (CW1)	
<b>Holy Trinity, Wyke</b>			<b>6.30pm</b> Patronal Festival Evensong
<b>St Nicholas, Bratton Seymour</b>	<b>9.30am</b> Holy Communion (BCP)		

# Diary Dates

## May

- 6 • **EVENT:** Budapest Cafe Orchestra, St Mary's, 7.30pm
- 7 • Roman Catholic Mass, St Mary's, 10am
- 11 • Bruton Boost week begins
- 12 • Shepton PCC, Village Hall, 6pm
- 14 • **EVENT:** Shepton Film Night, *Hamnet*, St Peters, 7.30pm
- 15 • Pitcombe PCC, Hadspen Farm, 2.30pm
- 20 • Bruton PCC, Plox Office, 5.30pm
- 21 • **BrueCrew:** Guided tour of Bruton Dam, 7 for 7.30pm
- 23 • **EVENT:** Shepton Plant Sale, St Peter's, 2.30pm
- 31 • Holy Trinity Patronal Festival, Wyke, 6.30pm

## June

- 3 • **EVENT:** *Into the Light*, a rewilding talk, Prickly Pear, 6.30pm
- 4 • Roman Catholic Mass, St Mary's, 10am
- 4 • Corpus Christi Eucharist, St Mary's, 6.30pm
- 11 • **EVENT:** Shepton Film Night, *film TBC*, St Peters, 7.30pm
- 12 • **EVENT:** *Dido & Aeneas*, St Mary's, 6.30pm
- 21 • St Peter's Patronal Festival, Shepton Montague, 6pm
- 29 • **EVENT:** Aurin Girls' Choir, St Mary's, 7.30pm

# Contact

## **Rev'd Jonathan Evans, Rector**

2 Plox Green, Bruton, BA10 0EY

Tel: 01749 812775

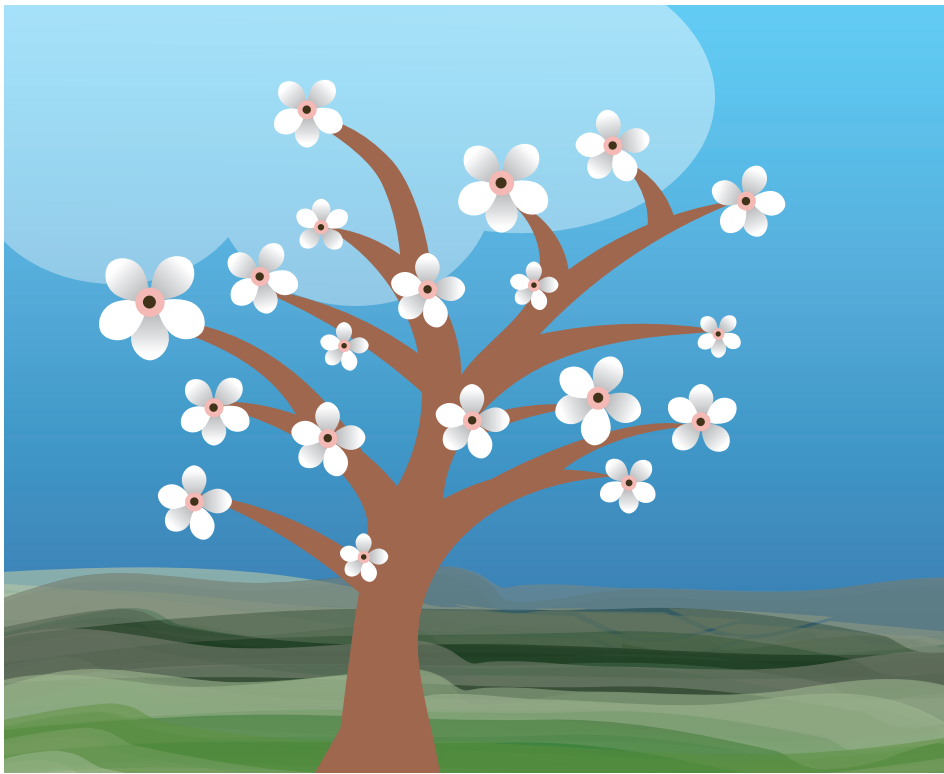
email: [rector@stmarysbruton.org](mailto:rector@stmarysbruton.org)

## **Benefice Office**

Tel: 01749 813080

email: [benefice@stmarysbruton.org](mailto:benefice@stmarysbruton.org)





[www.stmarysbruton.org](http://www.stmarysbruton.org)